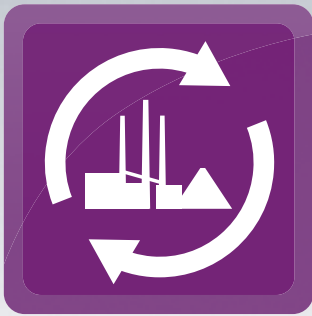


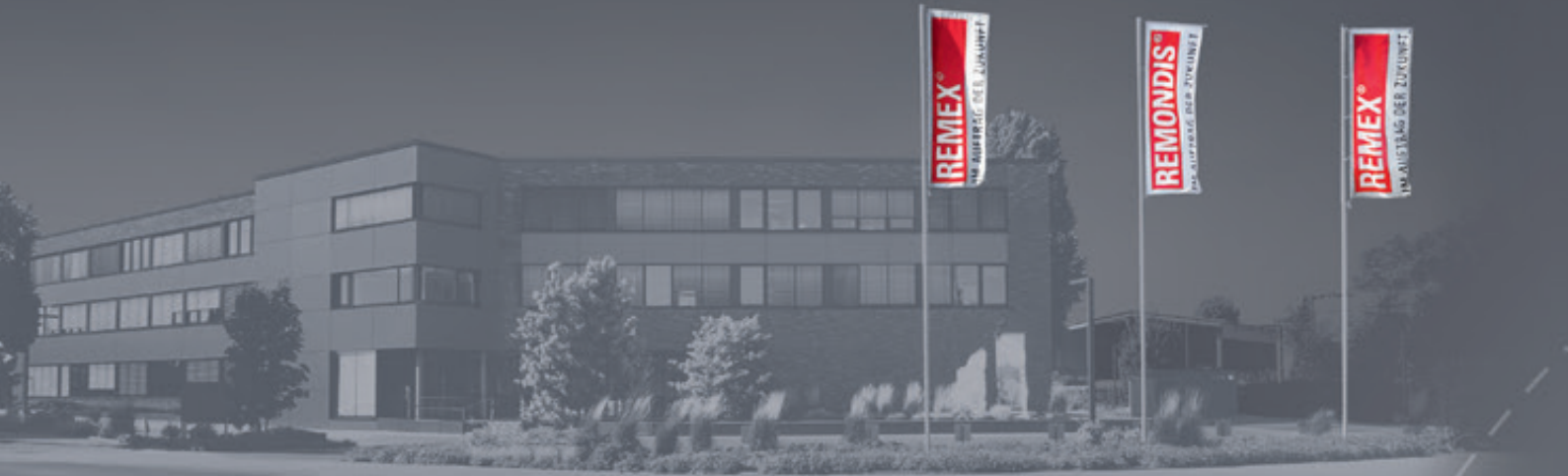
A company with vision



> REMEX company profile

Business areas, national and international activities, key figures, contribution to sustainability

remex.de



Portfolio with profile



A complete list of our locations can be found on
> locations.remex.de

REMEX GmbH is a specialist for the professional management of mineral waste from construction, industrial production and municipal solid waste incineration. Based in Düsseldorf, Germany, REMEX operates more than 30 subsidiaries and associated companies across Europe and Asia. With extensive knowledge of cross-border business activities, the company provides a complete scope of services from logistics and processing in its own recycling facilities to subsequent recovery or disposal, covering all areas of mineral waste management.

Focusing on the essential

Our core competencies include mineral waste management and the production of secondary construction materials as well as the recycling of metals recovered during mineral processing. These business activities are complemented by services in the areas of land reclamation and soil treatment, underground stowage, landfill management and the development of new recycling technologies.

Success at home and abroad

Since beginning its business activities in 1973, REMEX GmbH has enjoyed steady growth. As part of this development, the company has opened up new business areas and expanded its geographical presence. REMEX is now an internationally recognised brand for sustainable resource management across Europe and Asia.

international.remex.de



Details of our cross-border business activities can be found on our international website.



Activities at a glance

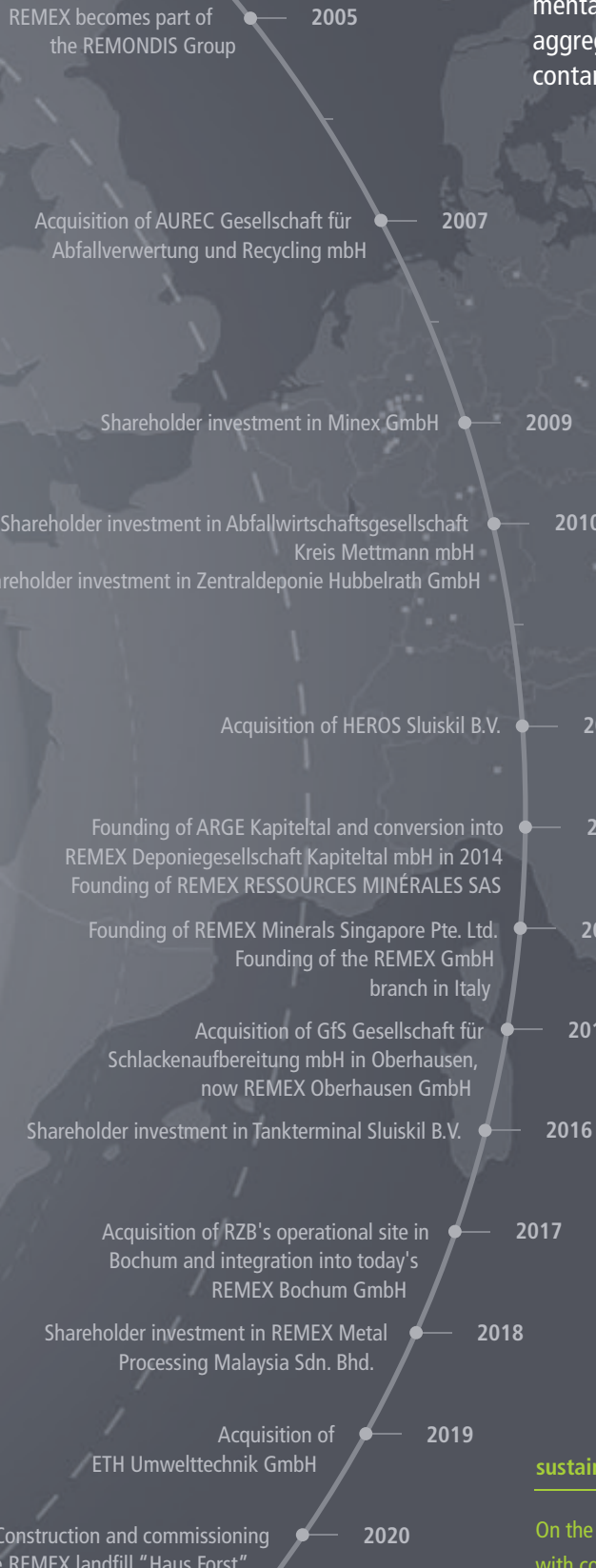
REMEX waste management operations are structured into distinct areas and offer all possibilities for the optimum processing and recovery of raw materials contained in mineral waste. We provide a complete scope of waste management services for both hazardous and non-hazardous waste.



MILESTONES

Achieving targets sustainably

REMEX is committed to three core sustainability challenges: climate protection, landscape conservation, and landfill capacity relief. Our contribution to environmental protection can be clearly measured through the production of secondary aggregates, recovery of metals, the remediation of land, and the treatment of contaminated soil.



Climate protection

During the processing of mineral waste, REMEX recovers valuable metals. These serve as secondary raw materials for the metal processing industry, which reduces the emission of climate-damaging gases. The emissions saved by our recycled metals correspond to the annual CO₂ capture of 725 km² of forest.

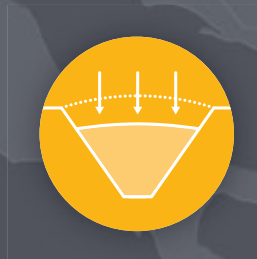
725 km²



Landscape conservation

The demand for gravel and sand worldwide is increasing continuously. Quarries and gravel pits take up valuable land. The use of substitute construction materials reduces the need to extract natural resources. Our production volume of secondary aggregates corresponds to the protection of 263 km of beach per year.

263 km



Landfill relief

Through our recycling activities, we avoid waste disposal and in doing so make a relevant contribution to reducing the need for landfill. In Germany, our recycling activities correspond to a 10% reduction in the annual waste volume deposited in landfills.

10%

sustainability.remex.de

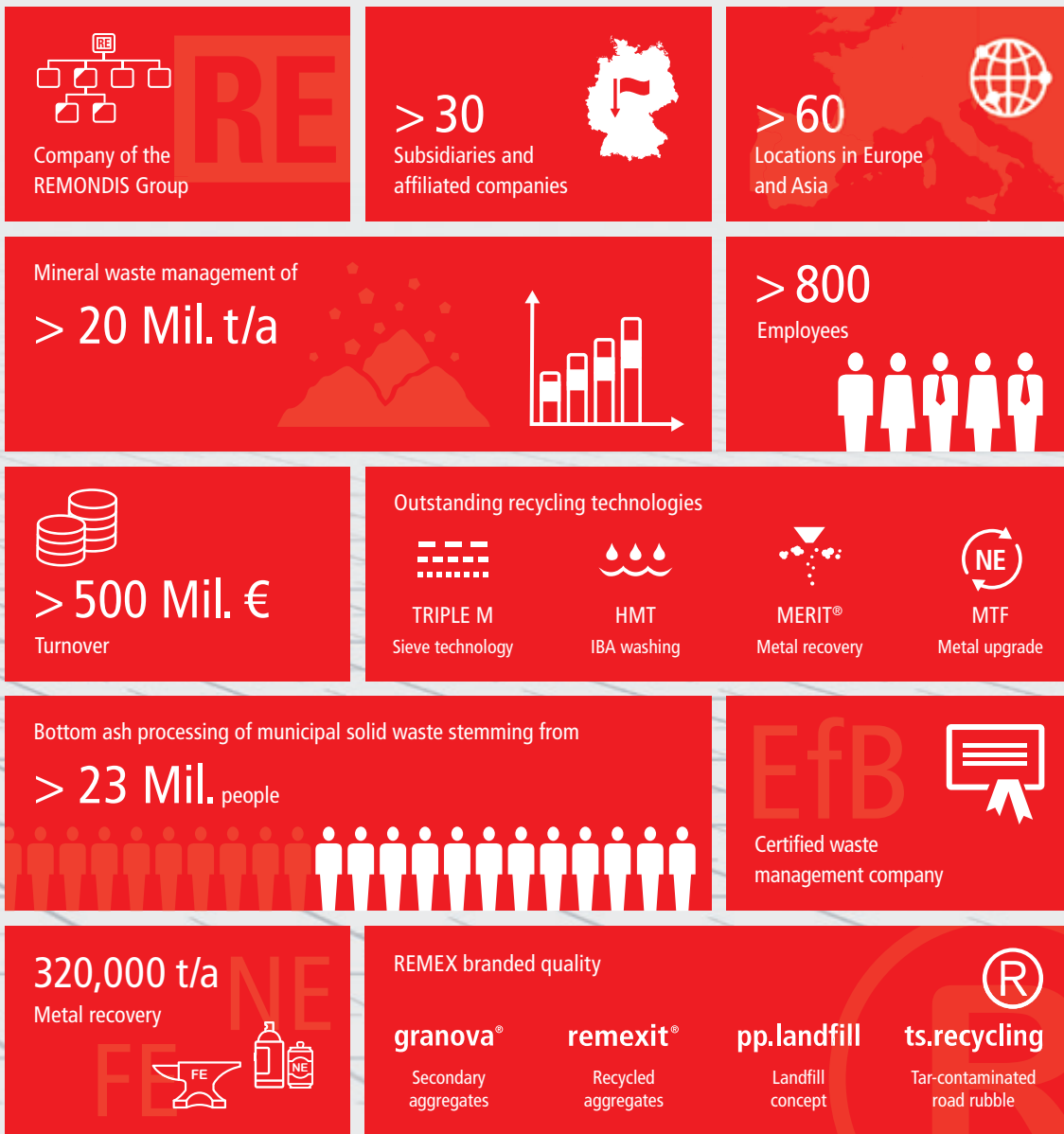
On the REMEX sustainability website, we document our contribution to environmental protection with concrete figures, explanatory notes and the corresponding data sources.



Key figures at a glance

Successful results are reflected in strong figures, and sustainable corporate development is represented in steady, moderate growth. REMEX delivers on both – securing the basis for long-term corporate success.

Learn more about REMEX on > [company-profile](#). remex.de



Have you visited our YouTube channel? Here you will find more than 40 films in different languages. > youtube.remex.de



WORKING FOR THE FUTURE

Being a specialist for managing and recycling mineral waste as well as for remediation work, underground stowage and landfill operation, REMEX is part of the REMONDIS Group, one of the world's largest recycling, service and water companies. The company group has branches and associated businesses in more than 30 countries across Europe, Africa, Asia and Australia. With over 30,000 employees, the group serves around 30 million people as well as many thousands of companies. The highest levels of quality. Working for the future.

REMEX GmbH
Am Fallhammer 1 // 40221 Düsseldorf
Germany // T +49 211 17160-0
F +49 211 17160-420 // info@remex.de
remex.de