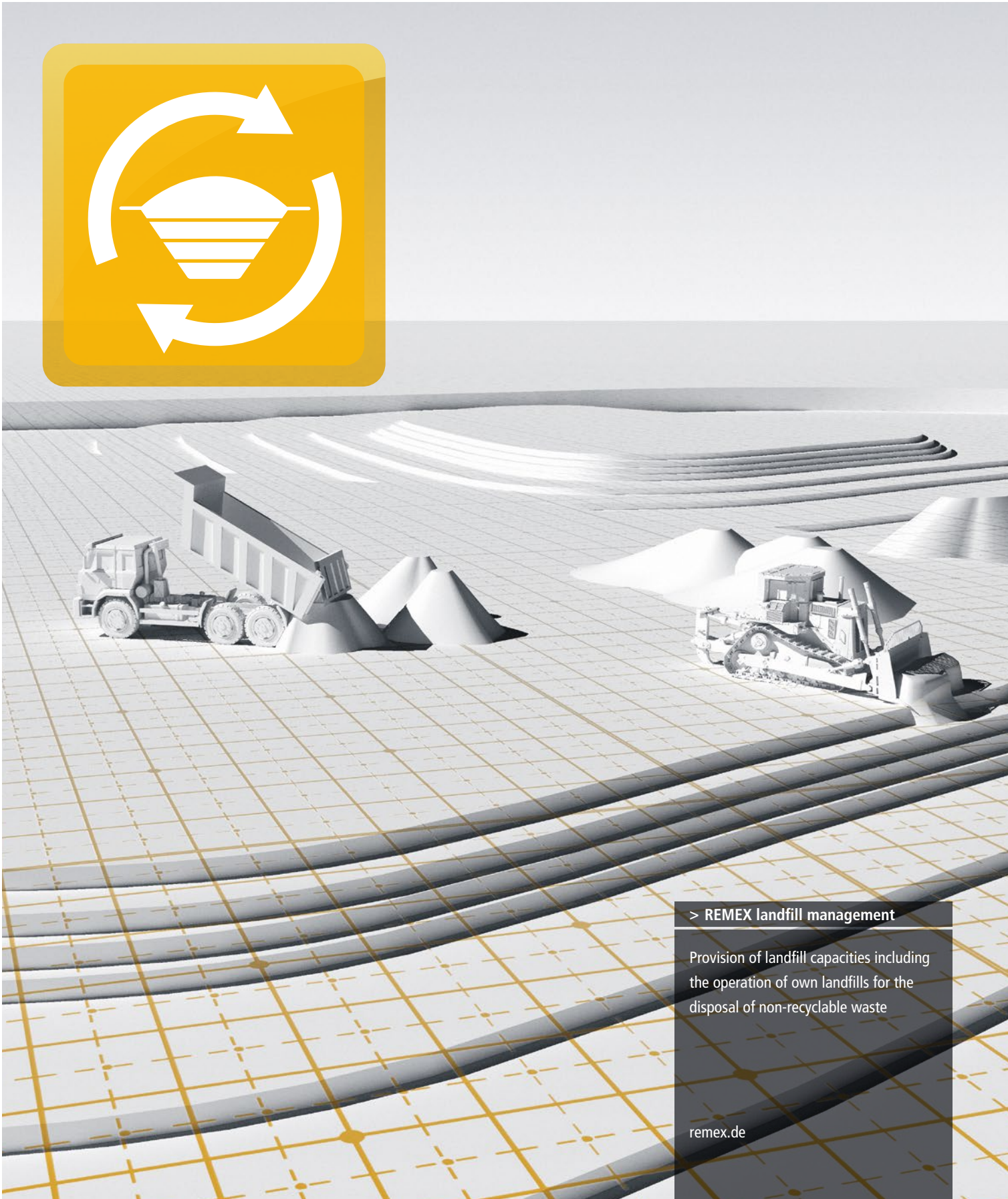


Indispensable landfill expertise



> REMEX landfill management

Provision of landfill capacities including the operation of own landfills for the disposal of non-recyclable waste



> REMEX LANDFILL MANAGEMENT

Disposal means responsibility

Although recovery rates are high, some mineral waste remains that cannot be recycled due to its pollutant load. REMEX offers suitable disposal options for these materials. In this field of business, we are also responsible for the planning, constructing and management of our own landfills. Our focus in this context is on providing safe storage capacities for waste of all contamination classes.



The legal framework for waste management is the cornerstone of our business

Security and stability in the long term

For the protection of public welfare, landfill sites are to be constructed, operated and decommissioned in compliance with technical and legal landfill regulations. Landfill operators must ensure long-term safety and legal conformity while also considering the economic aspects of waste disposal. As a waste management company, we are clearly committed to environmental protection and resource conservation, and thus to safeguarding the future of modern society.

Storage capacities for all landfill classes

For the disposal of waste, we maintain contingencies at landfills of all classes and are ourselves active landfill operators. Due to our experience with both hazardous and non-hazardous waste, we are able to provide expert knowledge and reliable processes for all mineral waste streams. In that context, careful compliance with all legal control and documentation obligations is our core task in day-to-day landfill operation.





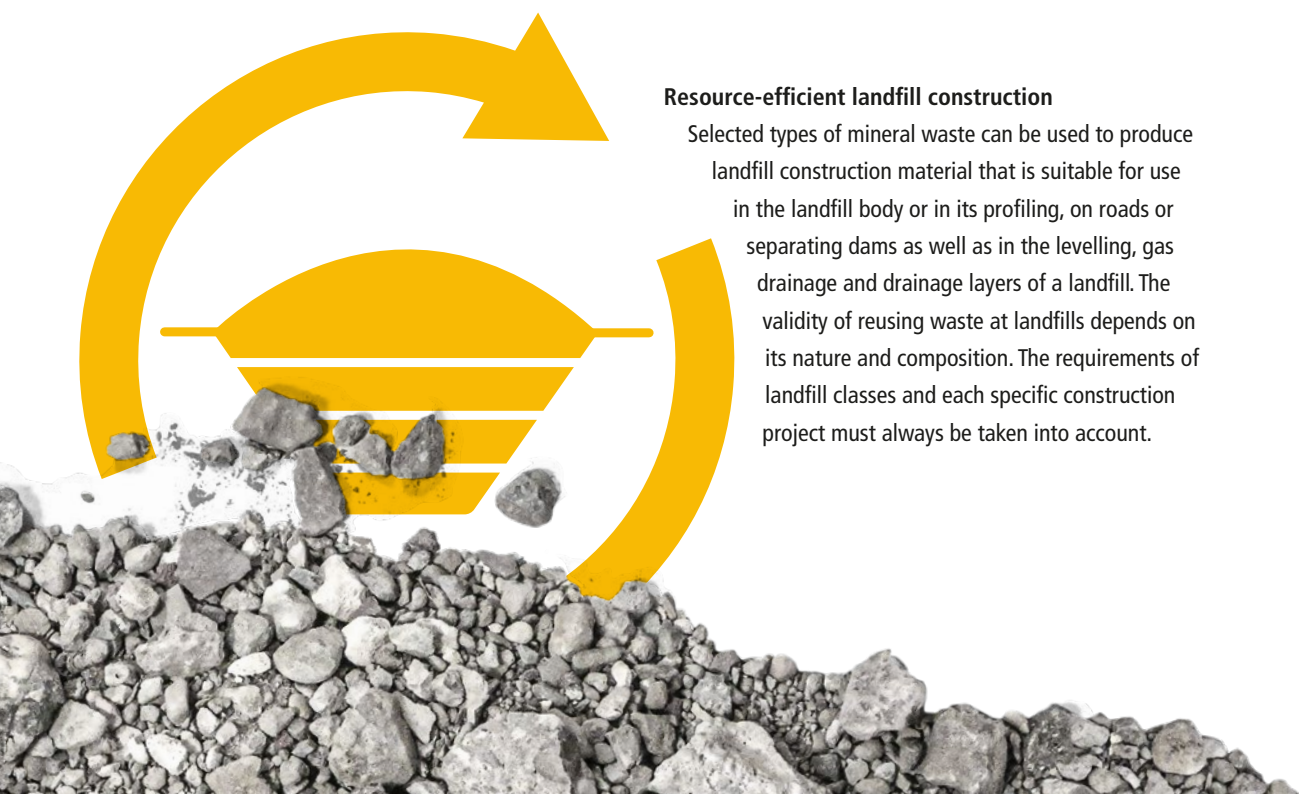
Sustainable advantage: our landfill construction materials

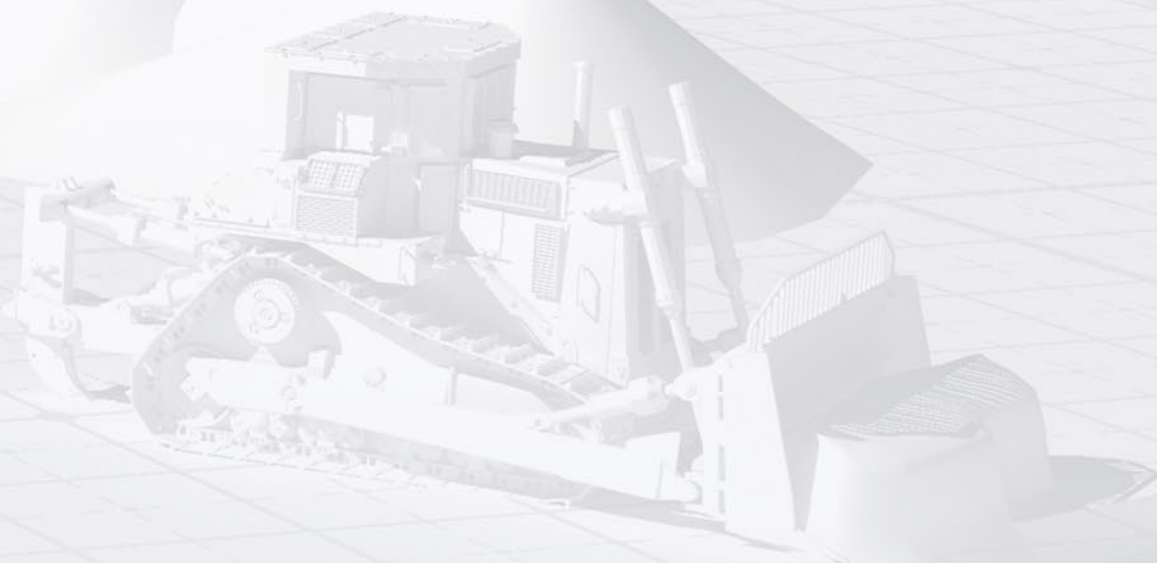
Suitable construction material is an important prerequisite for every construction project. This is especially true for landfill construction. We take into account the system components of the base and surface sealing as well as the technical functional layers required for landfill operation. For each project, we produce and supply secondary landfill construction materials in compliance with applicable regulations and in compliance with the specifications of the individual landfill construction project.

Mineral waste forms the basis for sustainable landfill construction materials

Resource-efficient landfill construction

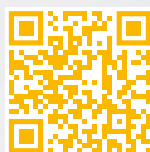
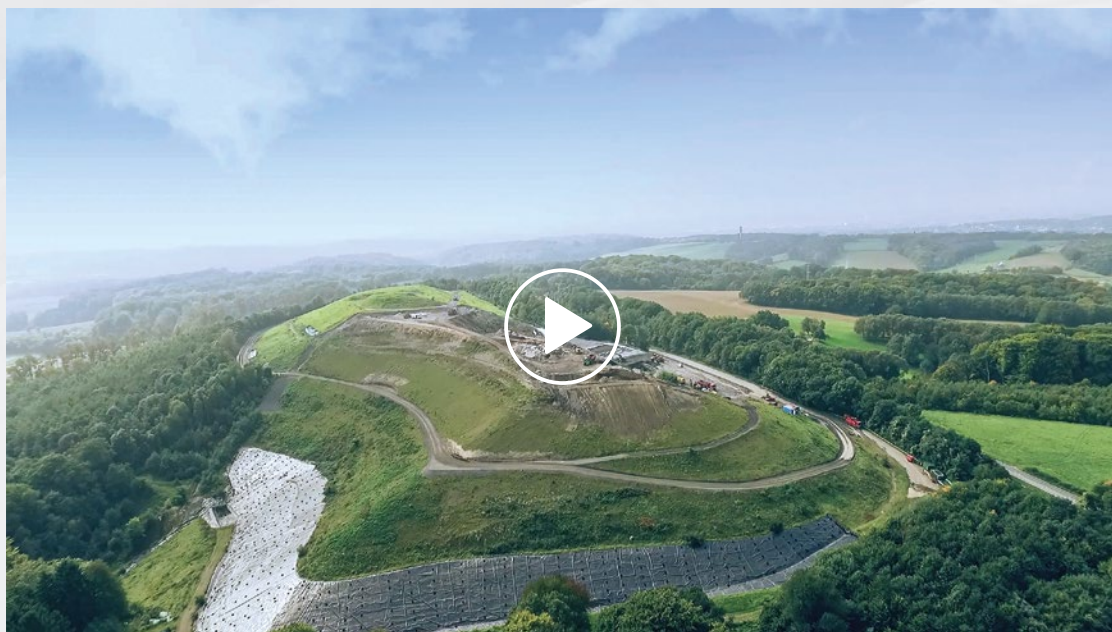
Selected types of mineral waste can be used to produce landfill construction material that is suitable for use in the landfill body or in its profiling, on roads or separating dams as well as in the levelling, gas drainage and drainage layers of a landfill. The validity of reusing waste at landfills depends on its nature and composition. The requirements of landfill classes and each specific construction project must always be taken into account.





Principle of a landfill

Landfills are complex structures. They are constructed according to the multi-barrier principle. Structural measures such as the geological barrier, base sealing and surface sealing serve to protect the environment from the adverse effects of waste disposal. The detailed requirements for construction, acceptance procedures, disposal, decommissioning and aftercare laid down in landfill legislation demonstrate the high safety standards required of today's landfills.



Landfill construction footage in video:

In order to provide a visual impression of landfill construction and landfill operation, we have filmed the activities of our affiliated company Zentraldeponie Hubbelrath GmbH.

> zdh-film-en.remex.de

Cooperation secures disposal capacities

REMEX has developed the pp.landfill cooperation model to promote the creation of new landfill volumes. This model enables us to provide both public and private sector landfill operators with financial and consulting services regarding the possible utilisation of former gravel/sand/clay pits and quarries as landfills or the expansion of existing landfills with new sections.



landfill-management.remex.de

Find out more about the landfill partnership model on our dedicated website. There, we not only explain the different cooperation possibilities, but also provide additional references on the management and construction of landfills.



WORKING FOR THE FUTURE

Being a specialist for managing and recycling mineral waste as well as for remediation work, underground stowage and landfill operation, REMEX is part of the REMONDIS Group, one of the world's largest recycling, service and water companies. The company group has branches and associated businesses in more than 30 countries across Europe, Africa, Asia and Australia. With over 30,000 employees, the group serves around 30 million people as well as many thousands of companies. The highest levels of quality. Working for the future.

REMEX GmbH
Am Fallhammer 1 // 40221 Düsseldorf
Germany // T +49 211 17160-0
F +49 211 17160-420 // info@remex.de
remex.de