

Prospects for a sustainable future



Portfolio with profile



A complete list of our
locations can be found
on > locations.remex.de

REMEX GmbH is a specialist for the professional management of mineral waste from construction, industrial production and municipal solid waste incineration. Based in Düsseldorf, Germany, REMEX operates more than 30 subsidiaries and associated companies across Europe and Asia. With extensive knowledge of cross-border business activities, the company provides a complete scope of services from logistics and processing in its own recycling facilities to subsequent recovery or disposal, covering all areas of mineral waste management.

Focusing on the essential

Our core competencies include mineral waste management and the production of secondary construction materials as well as the recycling of metals recovered during mineral processing. These business activities are complemented by services in the areas of land reclamation and soil treatment, underground stowage, covering of tailing piles and landfill management.

Success at home and abroad

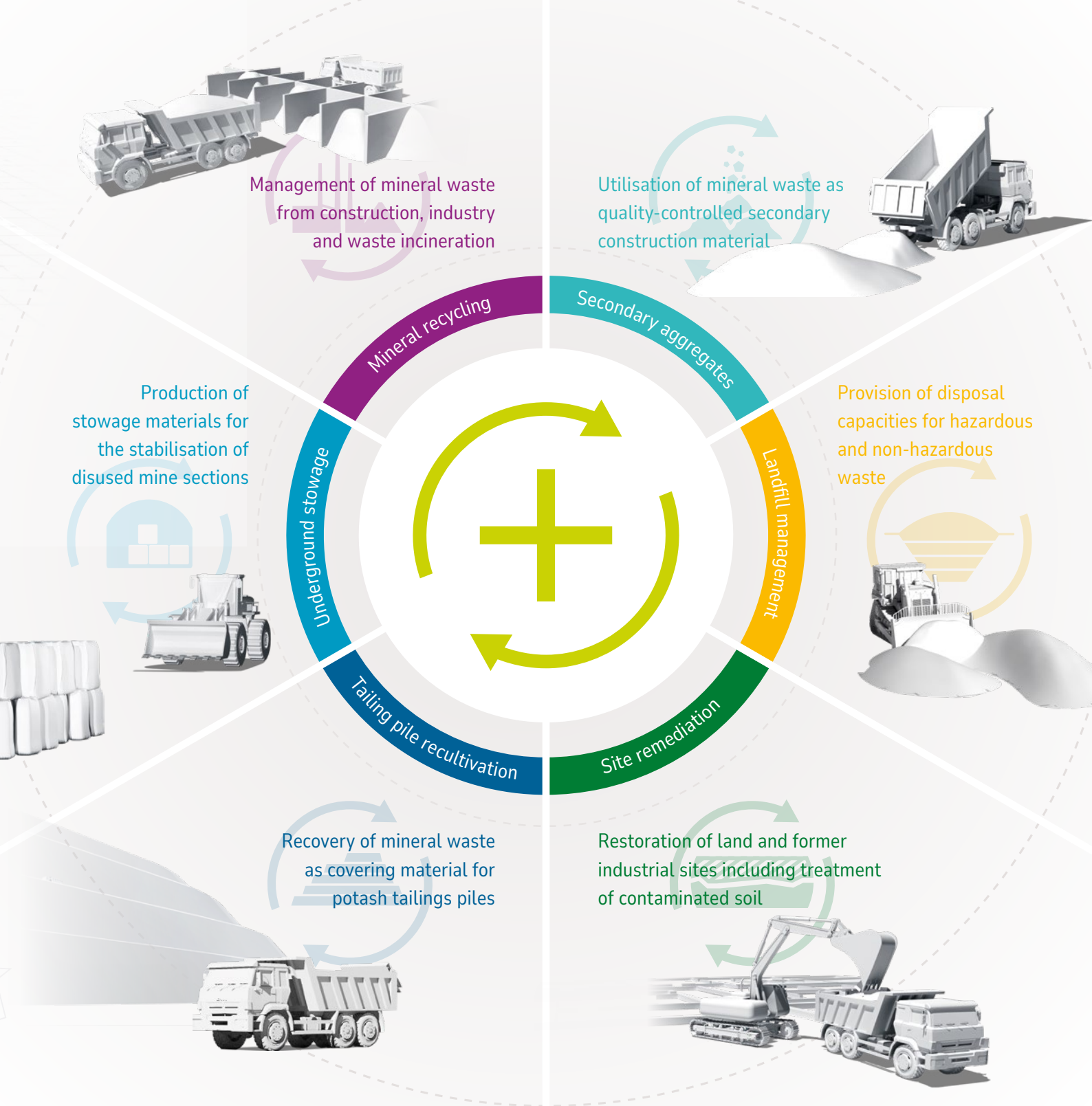
Since beginning its business, REMEX GmbH has enjoyed steady growth. As part of this development, the company has opened up new business areas and expanded its geographical presence. REMEX is now an internationally recognised brand for sustainable resource management across Europe and Asia.



Details about our cross-border business activities can be found on > international.remex.de

Activities at a glance

The REMEX portfolio is divided into different business areas and offers a wide range of options for the optimum processing and recovery of raw materials contained in mineral waste. We provide the complete scope of management services for both hazardous and non-hazardous waste.



MILESTONES

- 2005 ● REMEX becomes part of the REMONDIS Group
- 2007 ● Acquisition of AUREC Gesellschaft für Abfallverwertung und Recycling mbH
- 2009 ● Shareholder investment in Minex GmbH
- 2010 ● Shareholder investment in Abfallwirtschaftsgesellschaft Kreis Mettmann mbH
Shareholder investment in Zentraldeponie Hubbelrath GmbH
- 2012 ● Acquisition of HEROS Sluiskil B.V.
- 2013 ● Founding of ARGE Kapiteltal and conversion into REMEX Deponiegesellschaft Kapiteltal mbH in 2014
Founding of REMEX RESSOURCES MINÉRALES SAS
- 2014 ● Founding of REMEX Minerals Singapore Pte. Ltd.
Founding of the REMEX GmbH branch in Italy
- 2015 ● Acquisition of GfS Gesellschaft für Schlackenaufbereitung mbH in Oberhausen, now REMEX GmbH
- 2016 ● Shareholder investment in Tankterminal Sluiskil B.V.
- 2017 ● Acquisition of RZB's operational site in Bochum and integration into today's REMEX Bochum GmbH
- 2018 ● Shareholder investment in REMEX Metal Processing Malaysia Sdn. Bhd.
- 2019 ● Acquisition of ETH Umwelttechnik GmbH, now REMEX Nord GmbH
- 2020 ● Construction and commissioning of the REMEX landfill "Haus Forst"
- 2021 ● Acquisition of Großtagebau Kamsdorf GmbH, now REMEX Kamsdorf GmbH
- 2022 ● Shareholder investment in REKS GmbH & Co. KG
Acquisition of Dolphin Metal Separation B.V.
- 2024 ● Acquisition of the Biburg operating site of Umweltdienste Kedenburg and integration in REMEX GmbH
Shareholder investment in NEO Hardware Pte. Ltd.

Sustainability

Achieving targets sustainably

REMEX is committed to three core sustainability challenges: climate protection, landscape conservation, and landfill capacity relief. Our contribution to environmental protection can be clearly measured through the production of secondary aggregates, recovery of metals, the remediation of land, and the treatment of contaminated soil.



Climate protection

During the processing of mineral waste, REMEX recovers valuable metals. These serve as secondary raw materials for the metal processing industry, which reduces the emission of climate-damaging gases.

730,000 t/a CO₂-eq.



Landscape conservation

The demand for gravel and sand worldwide is increasing continuously. Quarries and gravel pits take up valuable land. The use of substitute construction materials reduces the need to extract natural resources.

2,850,000 m³/a



Landfill relief

Through our recycling activities, we avoid waste disposal and in doing so make a relevant contribution to reducing the need for landfill.

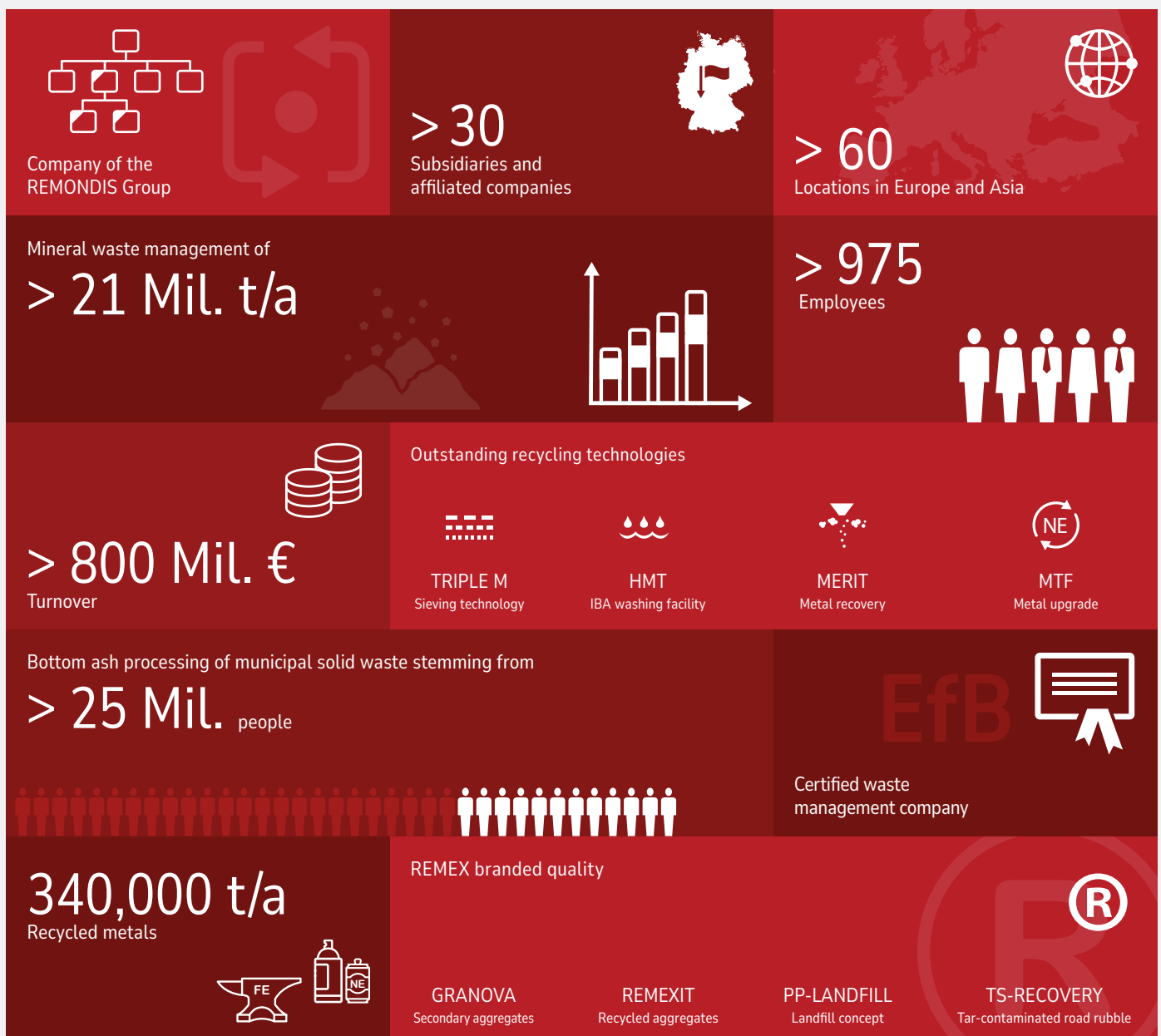
5,700,000 t/a

On the REMEX sustainability website, we document our contribution to environmental protection with concrete figures, explanatory notes and the corresponding data sources. > sustainability.remex.de

Key figures at a glance

Successful results are reflected in strong figures, and sustainable corporate development is represented in steady, moderate growth. REMEX delivers on both – securing the basis for long-term corporate success.

Learn more about REMEX on > [company-profile](#). remex.de



Have you visited our YouTube channel? Here you will find more than 50 films in different languages. > youtube.remex.de

REMEX specialises in the professional management of mineral waste and the recovery of resources it contains. Through its recycling activities, the company has a proven track record in reducing the consumption of gravel, sand and natural stone and improving the carbon footprint of metal production. REMEX is an international leader in the development of innovative recycling technologies and ranks among the largest manufacturers of secondary aggregates in Europe. REMEX is a member of the REMONDIS Group, one of the world's leading recycling, service and water companies.



REMEX GmbH
Am Fallhammer 1 // 40221 Düsseldorf
Germany // T +49 211 17160-0
F +49 211 17160-420 // info@remex.de
remex.de



@remex.gruppe



REMEX-Gruppe